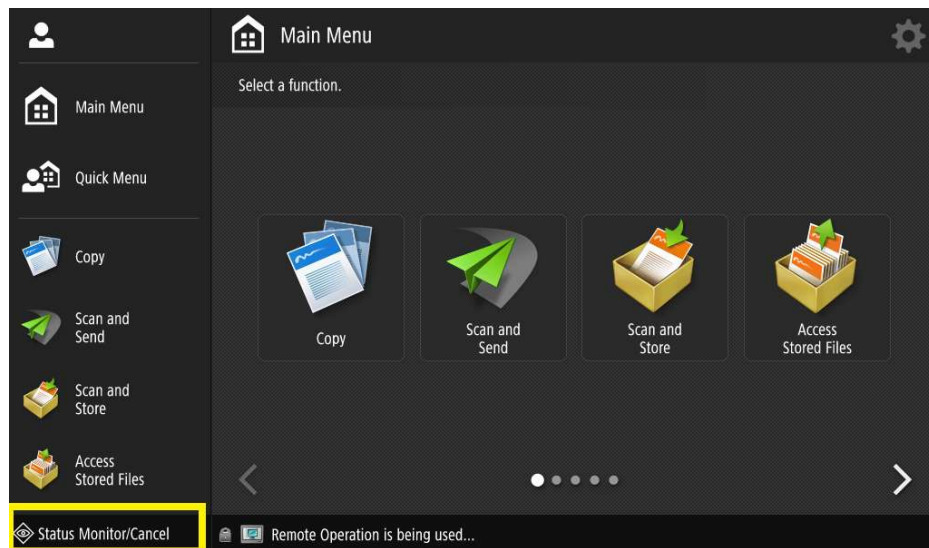
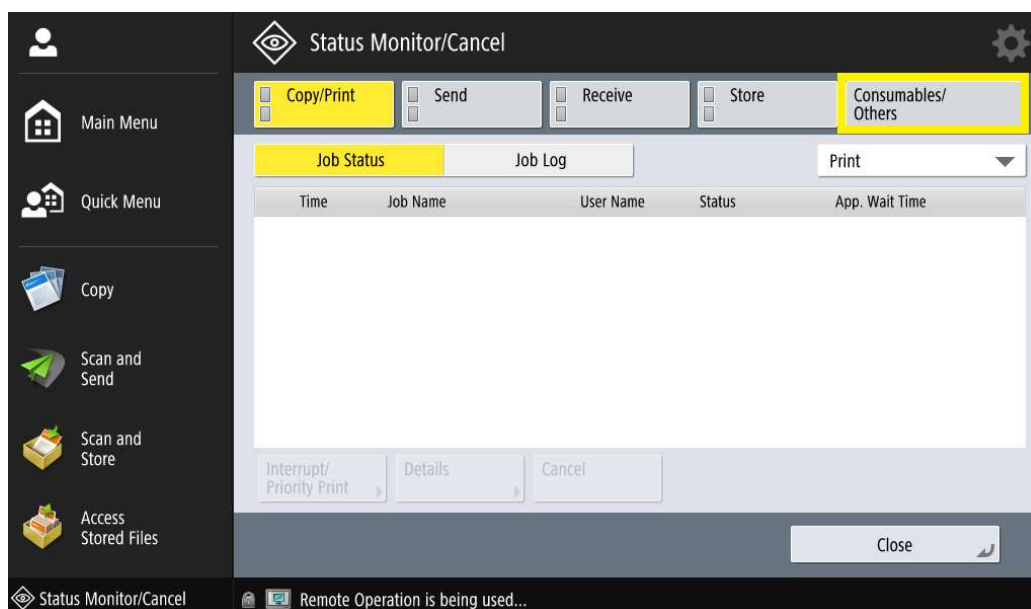


Checking supply levels on Canon IR-ADV Gen 3+ Photocopiers

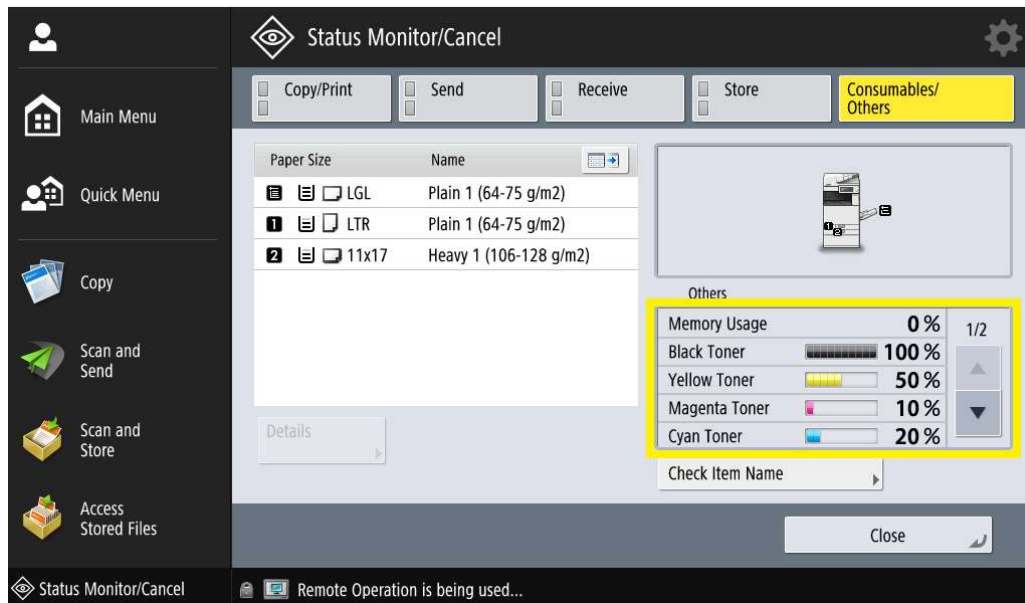
1. On the Main Menu home screen, select **“Status Monitor”**



2. In the Status Monitor screen, select **“Consumables/Other”**



3. Within “**Consumables/Other**” check the status of your toner cartridges in the bottom right of the screen



Please note that these numbers are not 100% correct. They are to be used as a guideline for total levels. **DO NOT** replace toner cartridges until instructed to by the photocopier.