

MY ADVANCE – MY DISPLAY

SCENARIO

- Do you prefer to use the device UI in a different language from your colleagues?
- Do you have issues with viewing the device at its default colours and would prefer to use a reversed colour display?
- Would you like to enable text magnification when previewing documents?

BENEFITS

- Changing the screen that is displayed when a user logs in creates a more personalized user experience for each individual
- Changing the language helps with anyone that may have a language barrier or does not speak English as a first language
- Additional accessibility settings helps make the device easier and convenient to use

Note:

Supported Models: All Third Generation imageRUNNER ADVANCE models

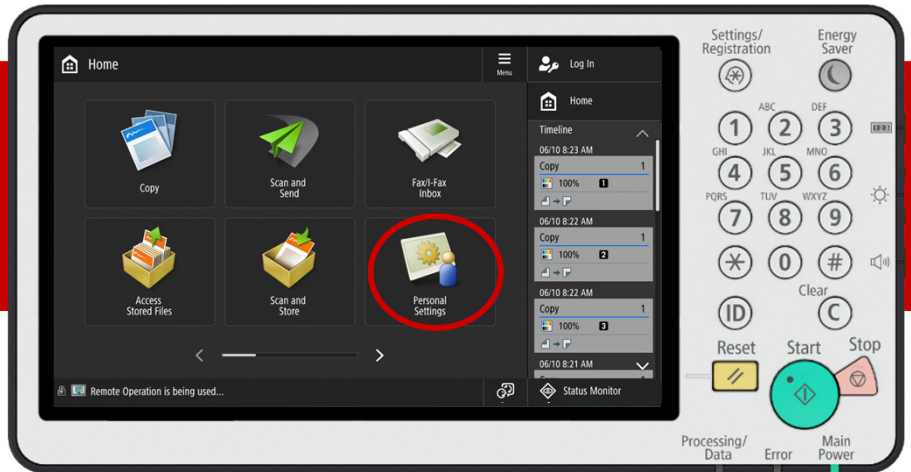
HOW TO:

My ADVANCE – Language and Accessibility Settings

1

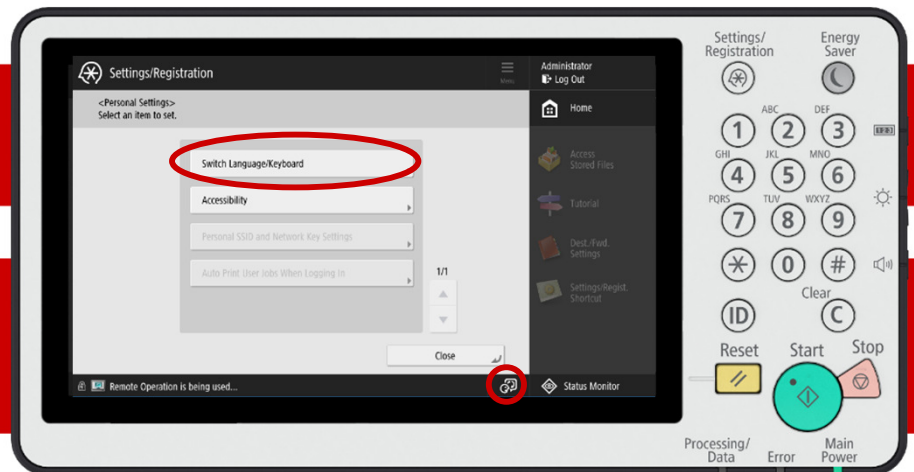
From the [Home Screen], press [Personal Settings]. Button location may differ on each device. Navigate through pages using the up/down arrows to find the required function.

Note: Personalization features can only be used if your device is configured with an authentication solution, like ULM



2

Select [Switch Language/Keyboard]

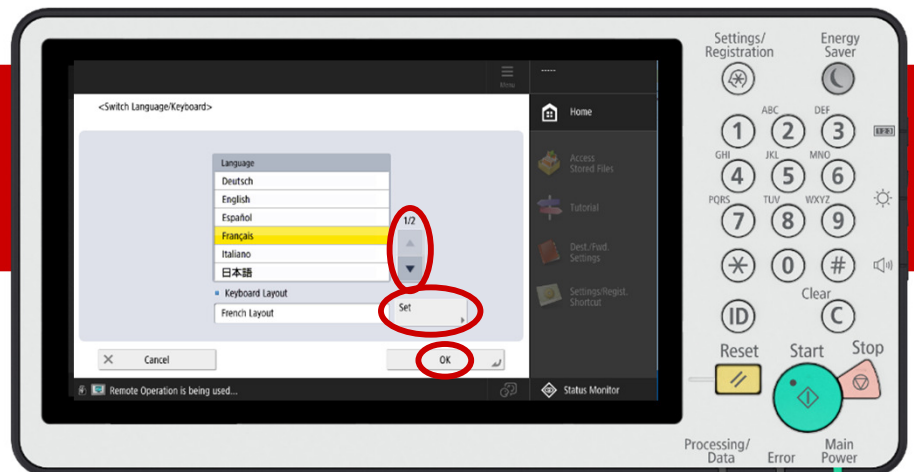


3

Alternatively, select the [Language Icon]. This can be found on the [Home Screen] for easy access

4

Choose your preferred language. Navigate through pages using the up/down arrows. Press [Set] if you would like to change the keyboard layout.



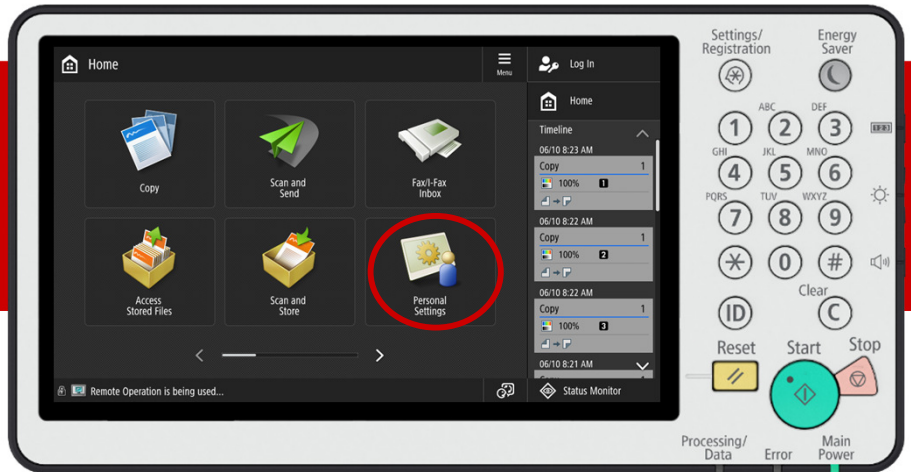
HOW TO:

My ADVANCE – Language and Accessibility Settings

5

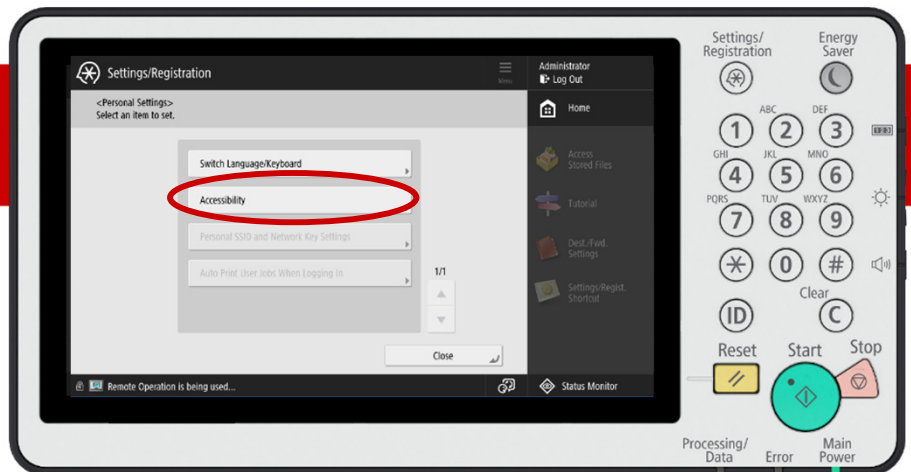
From the [Home Screen], press [Personal Settings]. Button location may differ on each device. Navigate through pages using the up/down arrows to find the required

Note: Personalization features can only be used if your device is configured with an authentication solution, like ULM



6

Select [Accessibility]



7

Choose the setting you wish to change

Note: [Key Repetition Settings] define the speed at which a key press is considered 'repeating'. [Reverse Display] changes the colour scheme from white text on a dark background to dark text on a light background. [Enable Screen Magnification] allows you to use pinch and zoom gestures.

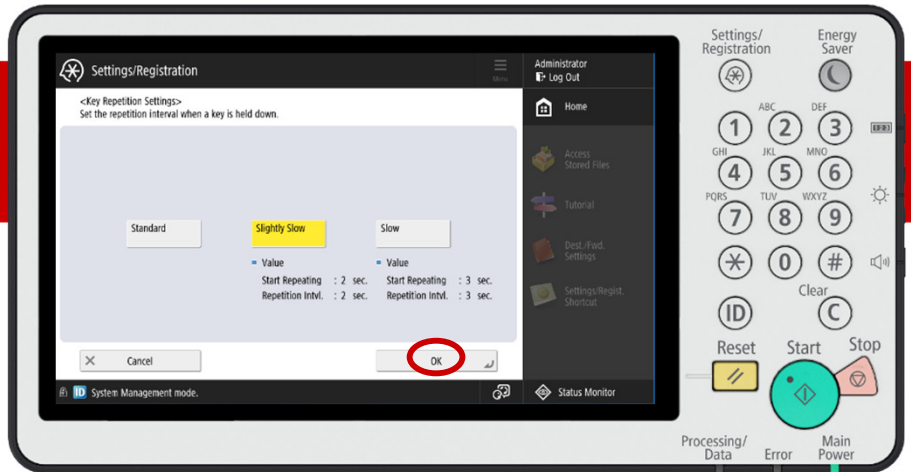


HOW TO:

My ADVANCE – Language and Accessibility Settings

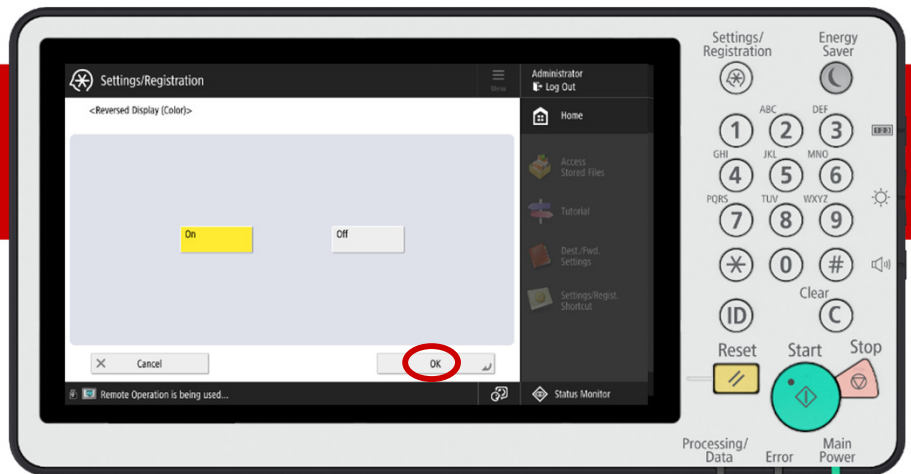
8

If you select [Key Repetition Settings] select a desired speed. Press [OK] when complete.



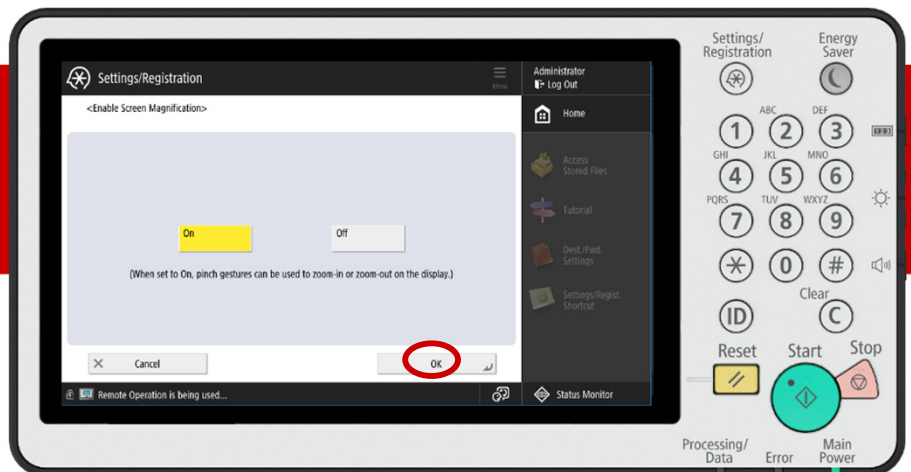
9

If you select [Reversed Display (Color)], press [On] to enable light text on a dark background. Press [OK] when complete.



10

If you select [Enable Screen Magnification], press [On] to enable print gestures like drag and drop, flick, and pinch. Press [OK] when complete.



Note:

Supported Models: All Third Generation imageRUNNER ADVANCE models